



ARMATUREN GmbH

SAFETY RELIEF VALVE **TYPE 11**



OUR DIVERSITY IS
YOUR PROFIT.

Safety Relief Valve SBV Type 11

Purpose

The purpose of the type 11 safety relief valve is to automatically release gas flowing in a pressurized line as soon as the pressure in the protected system rises to the set actuating pressure. The safety valve closes automatically when the pressure in the protected system decreases to below the closing pressure.

It can be used for all gases according to DVGW worksheet G260 and all non-aggressive gases. (Special versions are available for other gases).

Characteristics

- High actuation accuracy
- Easy maintenance, because maintenance is possible on site without removing the valve
- Simple design => few parts subject to wear
- No special tools required

DIN-DVGW Registration Number

Nominal width	Pressure stage	Registration No.
DN 15	PN 25	NG-4395AS0082

Approved according to DIN 3381 "Safety Devices for Gas Supply Systems with Operating Pressures up to 100 Bar". (Edition June 1984).

Technical Data

Permissible pressure $p_{max.}$ up to 25 bar

Valve diameter 8 mm

Operating temperature -15°C bis +60°C

Medium Suitable for all gases according to DVGW worksheet G260 and all non-aggressive gases

Installation

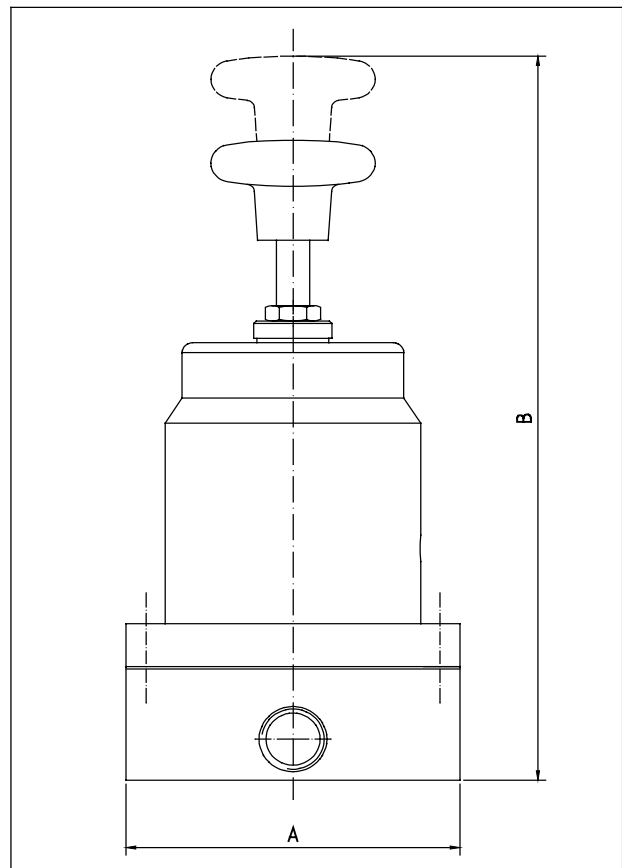
The type 11 safety valve can be installed in any desired position. The outlet should always exhaust into the atmosphere.

Adjustment Ranges

Guide range [bar]	Drawing-number	Wire - \varnothing [mm]	AG	Blow-out rate Q [Nm ³ /h]
0,03 - 0,30	4-SBV-3/4x100	4,0	10	26
0,30 - 0,90	4-SBV-3/5x100	5,0	5	53
0,90 - 1,80	4-SBV-3/6x100	6,0	2,5	78
1,80 - 2,90	4-SBV-3/7x100	7,0	2,5	108
2,90 - 4,50	4-SBV-3/8x100	8,0	1	153
4,50 - 8,00	4-SBV-3/9x100	9,0	1	222

Other adjustment pressures available on request!

Installation Dimensions

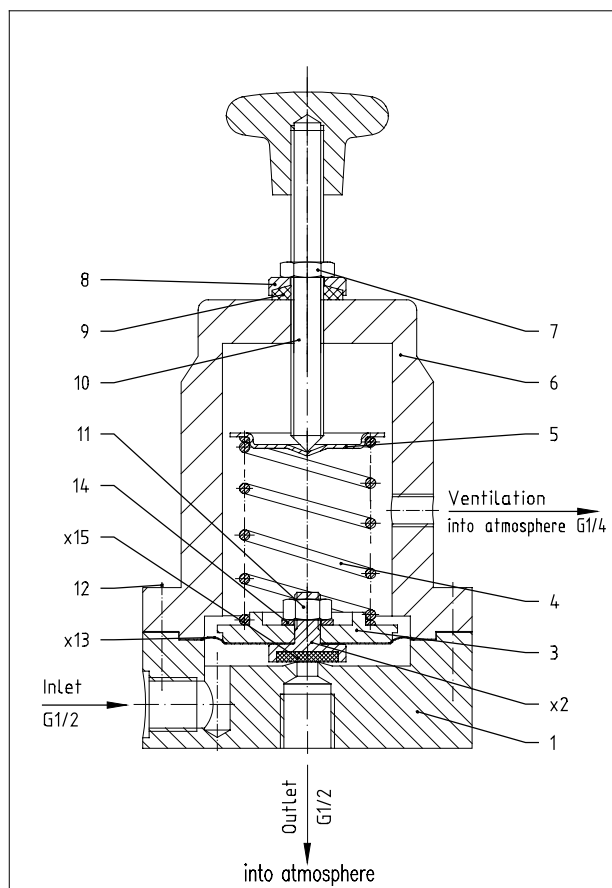


\varnothing A [mm]	B [mm]	Weight [kg]
128	290	3,8

Line Connections

Ventilation	G1/4	for unsoldered, threaded pipe fitting with cutting ring according to DIN 2353 for pipe dia. 12x1.5
Inlet Outlet	G1/2	for unsoldered, threaded pipe fitting with cutting ring according to DIN 2353 for pipe dia. 16x1.5

Layout



x: Spare parts; keep on hand for maintenance

Items (2; 15) only available complete

Function

The type 11 safety relief valve is a directly acting spring loaded unit (without auxiliary power).

The pressure to be checked travels through the inlet line below diaphragm **13**, which is spring loaded by spring **4**. If the pressure increases to an impermissible level and surpasses the setting of spring **4**, diaphragm **13** moves up lifting valve **2**. The pressure flows through the outlet line into the atmosphere. When the pressure drops to below the set spring value, valve **2** closes with the aid of the spring force.

Adjustment

Adjustment can be accomplished with cross handle **10** and is possible under operating pressure. Turning to the right increases the setting. The values specified in the adjustment range table should not be exceeded.

General Maintenance Instructions

When installing and equipping as well as monitoring and servicing safety equipment always observe the applicable regulations, particularly the DVGW worksheets G490, G491 and G495.

Always perform maintenance work only on units when not under pressure and have maintenance performed only by trained personnel.

Parts list for SBV Typ 11

Item	Quant.	Units	Designation	Standard / drawing number	Material / remarks
1	1	each	Bottom diaphragm housing	4-SBV-1	Al
x2	1	each	Valve	4-SBV-2	Ms
3	1	each	Diaphragm plate	4-St-9/H	Al
4	1	each	Adjustment spring	4-SBV-3/...	Spring steel C, chromat.
5	1	each	Spring plate	4-St-13	St, chromated
6	1	each	Top diaphragm housing	4-St-18/H	Al
7	1	each	Hex. nut	DIN 431, G1/4	St, galvanized
8	1	each	Pressing ring	4-St-15	Ms
9	1	each	Spindle seal	4-St-14	Perbunan
10	1	each	Cross handle with spindle	4-St-17	Ms, Duroplast
11	1	each	Hex. nut	DIN 934, M10	St, galvanized
12	8	each	Allen screw	DIN 912, M6x20	8.8, galvanized
x13	1	each	Diaphragm	4-St-8/H	Perbunan
14	1	each	Washer	DIN 125, 10.5x2.5	St, galvanized
x15	1	each	Valve seal	Ø24x4	Perbunan

Please indicate unit serial number on every inquiry or parts order!

COMPETENCE
IN GAS!



ARMATUREN GmbH

OUR PRODUCT PROGRAM

DIN-DVGW

- Gas-Take Over Stations
 - Gas-Regulaton Cabinets
 - Station Accessories
 - Gas-Pressure Regulators
 - Safety Shut Off Valves
 - Safety Relief Valves
 - Overflow Regulators
 - Vaccum Regulators
 - Differential Pressure Regulators
 - Special Design Regulators
-

OUR ADMISS IONS



Certified according
to DIN EN ISO 9001



Production of Gas Stations
DVG W (working paper) G493/1



Maintenance of Gas Stations
DVG W (working paper) G493/2

W2 Armaturen GmbH

Dr.-Alfred-Herrhausen-Allee 44a | 47228 Duisburg, Germany

T (020 65) 77 09 60 | F (020 65) 77 09 66 | info@w2-armaturen.de | www.w2-armaturen.de